

RENO AVENUE (EW-107)  
SECTION 33, T12N-R3W

N 89°41'20" E T 12 N - R 3 W  
2638.97' T 11 N - R 3 W



SECTION 5, T11N-R3W  
WESTERN AVENUE (NS-307)

N 00°13'59" W  
2669.43'

9019  
RESET MAG NAIL  
& CA 990 SHINER  
N = 166665.0805

9020  
FOUND 1/2" IP  
N = 164027.8253  
E = 2108456.1912

N 89°19'38" E  
2640.05'

S 89°14'12" W  
2656.06'

S. WALKER AVENUE (NS-307.5)

N 00°05'46" W  
2656.16'

9022  
RESET MAG NAIL & CA 990 SHINER  
N = 166696.0799  
E = 2111085.7223

512  
N = 164063.2045  
E = 2111112.0164

N 89°38'08" E  
2631.87'

N 89°51'07" E  
2601.16'

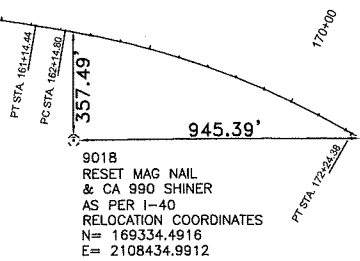
S. SANTA FE AVENUE (NS-308)

N 00°03'26" E  
2653.74'

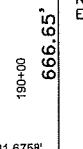
9025  
RESET 1/2" IP WITH DELTA CAP  
N = 166712.8263  
E = 2113717.5352

9026  
RESET MAG NAIL  
& CA 990 SHINER  
N = 164069.9295  
E = 2113713.1694

SW 15th STREET (EW-108)  
SECTION 9, T11N-R3W



CURVE # 4  
PI Sta = 185+75.53  
R = 1150.00'  
Dc = 4°58'56.07"  
Δ = 30°13'09.00"  
L = 606.54'  
T = 310.50'  
N = 168682.55  
E = 2110524.82  
CL = 599.53'  
CB = S 75°12'9.50" E  
EXT = 41.18'



COORDINATE LIST		
No.	NORTHING	EASTING
9018	169334.4916	2108434.9912
530	169352.2387	2111081.2637
760	169366.5686	2113720.1899
9025	166712.8263	2113717.5352
9026	164069.9295	2113713.1694
512	164063.2045	2111112.0164
9020	164027.8253	2108456.1912
9019	166665.0805	2108445.8494

SECTION 4, T11N-R3W, IM  
OKLAHOMA COUNTY, OKLAHOMA

DESIGN		OKLAHOMA DEPARTMENT OF TRANSPORTATION
DRAWN	LJ	GEOMETRIC & LAND TIES SHEET
CHECKED	DWM	
APPROVED		
PROJECT NO. OKCY-XTWN (078) STATE JOB NO. 17428 (88) SHEET NO. 54		